

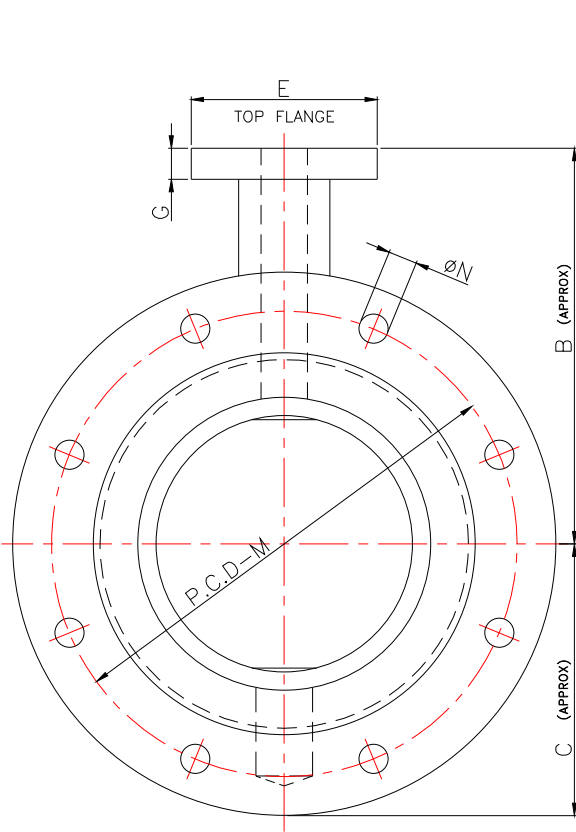
DOUBLE FLANGE CENTRIC DISC TYPE BUTTERFLY VALVE DF-BFV/50-200



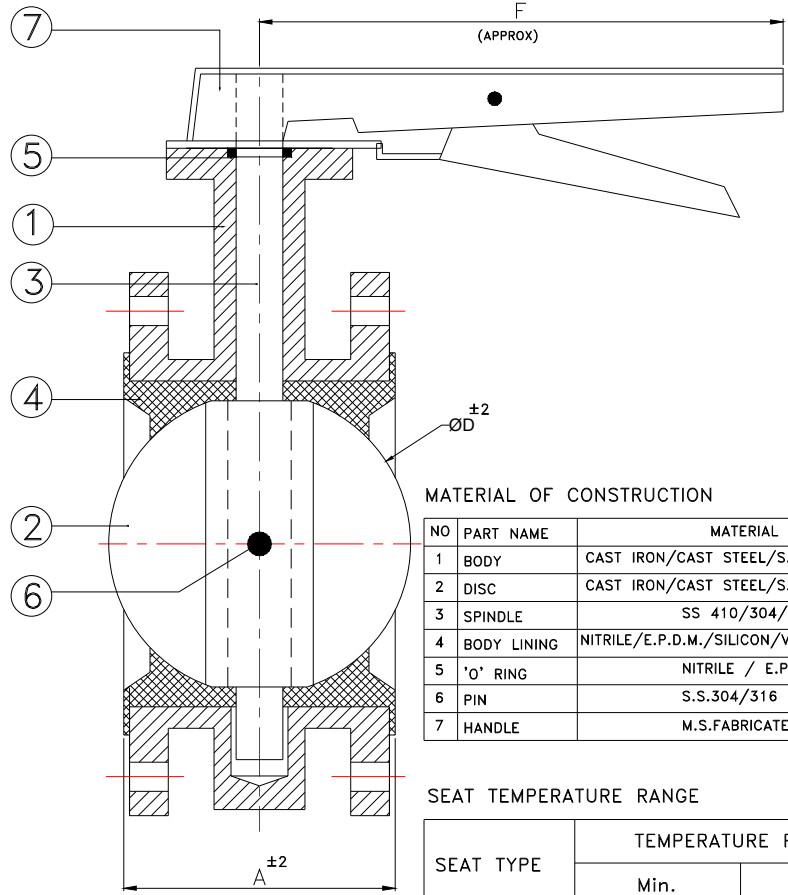
Mevada Engineering Works Pvt. Ltd.

Unit No.1, Plot No.9, Mistry Industrial Estate, I.B. Patel Road,
Goregaon (East), Mumbai - 400063. INDIA
Email: sales@saturnvalves.com
Visit: www.saturnvalves.com

DRN MASUM	DATE 23/04/2018	
DOUBLE FLANGE CENTRIC DISC TYPE BUTTER FLY VALVE.		
DRG. NO : SE/DF-BFV/50-200		



O = NUMBER OF HOLES.



MATERIAL OF CONSTRUCTION

NO	PART NAME	MATERIAL
1	BODY	CAST IRON/CAST STEEL/S.S.304-316
2	DISC	CAST IRON/CAST STEEL/S.S.304-316
3	SPINDLE	SS 410/304/316
4	BODY LINING	NITRILE/E.P.D.M./SILICON/VITON/HYPALON
5	'O' RING	NITRILE / E.P.D.M.
6	PIN	S.S.304/316
7	HANDLE	M.S.FABRICATED

SEAT TEMPERATURE RANGE

SEAT TYPE	TEMPERATURE RANGE	
	Min.	Max.
NITRILE	-13°F(-25°C)	212°F(100°C)
EPDM	-13°F(-25°C)	250°F(120°C)
SILICON	-58°F(-50°C)	356°F(180°C)
VITON	-23°F(-5°C)	392°F(200°C)
HYPALON	-4°F(-20°C)	250°F(120°C)

TESTING

PRESSURE RATING	HYDROSTATIC SHELL TEST		HYDROSTATIC SEAT TEST	
	Kg/CM2	PSI	Kg/CM2	PSI
PN16	22	310	16	225
PN10	15	210	10	140

NOTE : ALL DIMENSION ARE IN MM.

SIZE		A	B	C	D	E	F	G	TOP FLANGE MOUNTING (I.S.O 5211)
50	2"	108	125	85	50	65	180	15	F05
65	2½"	112	135	95	63	65	180	15	F05
80	3"	114	155	102	76	65	215	15	F05
100	4"	127	160	112	100	65	215	15	F05
125	5"	140	180	134	125	65	265	15	F05
150	6"	140	210	147	150	65	265	15	F05
200	8"	152	250	175	200	75	325	15	F07

NOTE:-M,N,O AS PER REQUIREMENT

M = _____
N = _____
O = _____

CONFORMITY TO CODES & STANDARDS

- 1) GENERAL DESIGN & MANUFACTURE :- BS 5155 / API 609 / EN 593 / IS 13095
- 2) VALVE FACE TO FACE DIMENSION :- BS 5155 / ISO 5752 / API 609
- 3) TOP FLANGE DRILLING :- ISO 5211
- 4) VALVE INSPECTION & TESTING :- BS 6755 Part - I / API 598 / EN 12266-1
- 5) FLANGE STANDARD CONFORMITY :- ANSI 150 / ANSI 125 / BS 10 TAB D & E
IS 6392 NP 0.6 / 1.0 /1.6

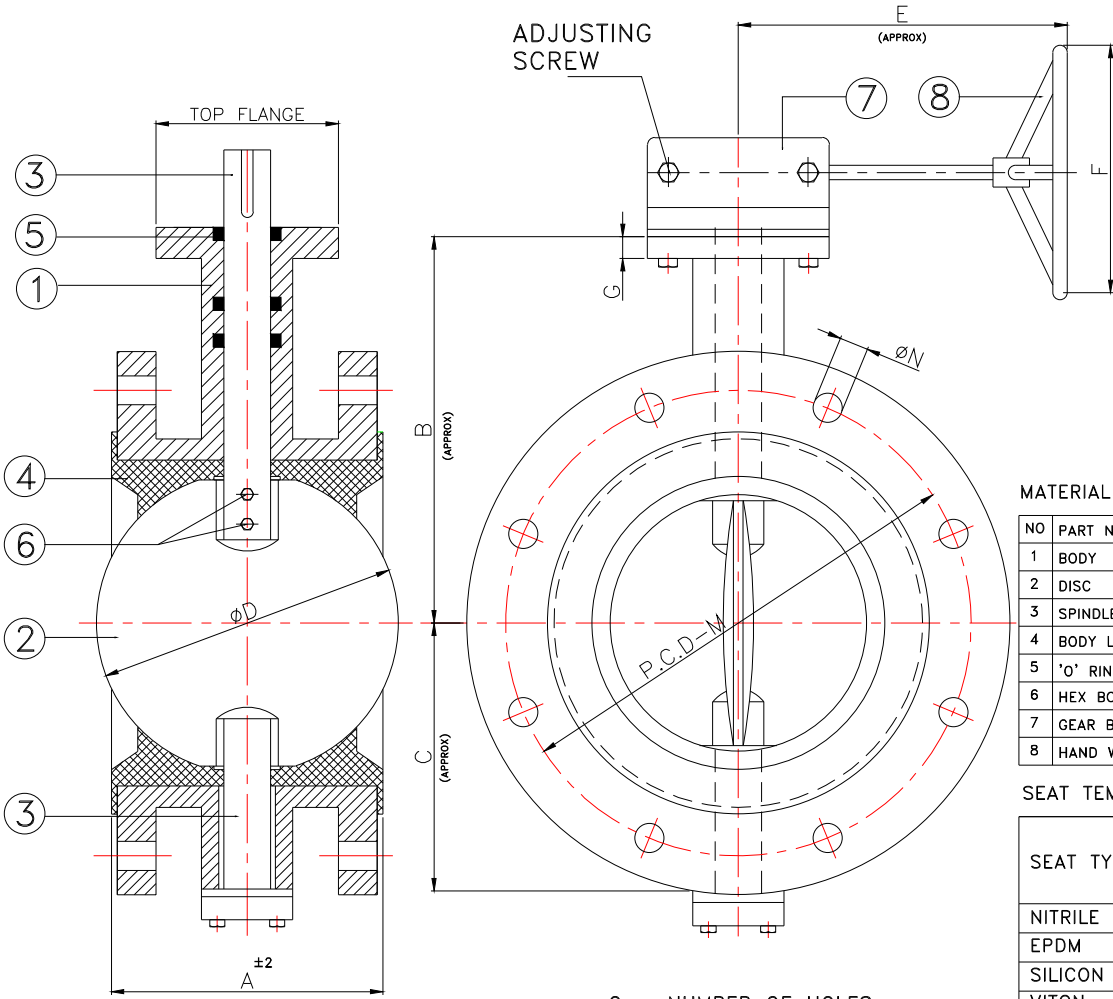
DOUBLE FLANGE CENTRIC DISC TYPE BUTTERFLY VALVE DF-BFV-G/50-200



Mevada Engineering Works Pvt.Ltd.

Unit No.1, Plot No.9, Mistry Industrial Estate, I.B.Patel
 Road, Goregaon (East), Mumbai - 400063. INDIA
 Email: sales@saturnvalves.com
 Visit: www.saturnvalves.com

DRN MASUM	DATE 24/04/2018	
DOUBLE FLANGE CENTRIC DISC TYPE BUTTER FLY VALVE.		
DRG. NO : SE/DF-BFV-G/50-200		



MATERIAL OF CONSTRUCTION

NO	PART NAME	MATERIAL
1	BODY	CAST IRON/CAST STEEL/S.S.304-316
2	DISC	CAST IRON/CAST STEEL/S.S.304-316
3	SPINDLE	SS 410/304/316
4	BODY LINING	NITRILE/E.P.D.M./SILICON/VITON/HYPALON
5	'O' RING	NITRILE / E.P.D.M.
6	HEX BOLT	S.S.304/316
7	GEAR BOX	CAST IRON
8	HAND WHEEL	M.S. FABRICATED

SEAT TEMPERATURE RANGE

SEAT TYPE	TEMPERATURE RANGE	
	Min.	Max.
NITRILE	-13°F(-25°C)	212°F(100°C)
EPDM	-13°F(-25°C)	250°F(120°C)
SILICON	-58°F(-50°C)	356°F(180°C)
VITON	-23°F(-5°C)	392°F(200°C)
HYPALON	-4°F(-20°C)	250°F(120°C)

TESTING

PRESSURE RATING	HYDROSTATIC SHELL TEST		HYDROSTATIC SEAT TEST	
	Kg/CM2	PSI	Kg/CM2	PSI
PN16	22	310	16	225
PN10	15	210	10	140
PN6	9	126	6	84

NOTE : ALL DIMENSION ARE IN MM.

SIZE		A	B	C	D	E	F	G	TOP FLANGE MOUNTING (I.S.O 5211)
MM	INCH								
50	2"	108	125	85	50	65	180	15	F05
65	2½"	112	135	95	63	65	180	15	F05
80	3"	114	155	102	76	65	215	15	F05
100	4"	127	160	112	100	65	215	15	F05
125	5"	140	180	134	125	65	265	15	F05
150	6"	140	210	147	150	65	265	15	F05
200	8"	152	250	175	200	75	325	15	F07

NOTE:-M,N,O AS PER REQUIREMENT

M = _____
 N = _____
 O = _____

CONFORMITY TO CODES & STANDARDS

- 1) GENERAL DESIGN & MANUFACTURE :- BS 5155 / API 609 / EN 593 / IS 13095
- 2) VALVE FACE TO FACE DIMENSION :- BS 5155 / ISO 5752 / API 609
- 3) TOP FLANGE DRILLING :- ISO 5211
- 4) VALVE INSPECTION & TESTING :- BS 6755 Part - I / API 598 / EN 12266-1
- 5) FLANGE STANDARD CONFORMITY :- ANSI 150 / ANSI 125 / BS 10 TAB D & E
 IS 6392 NP 0.6 / 1.0 / 1.6

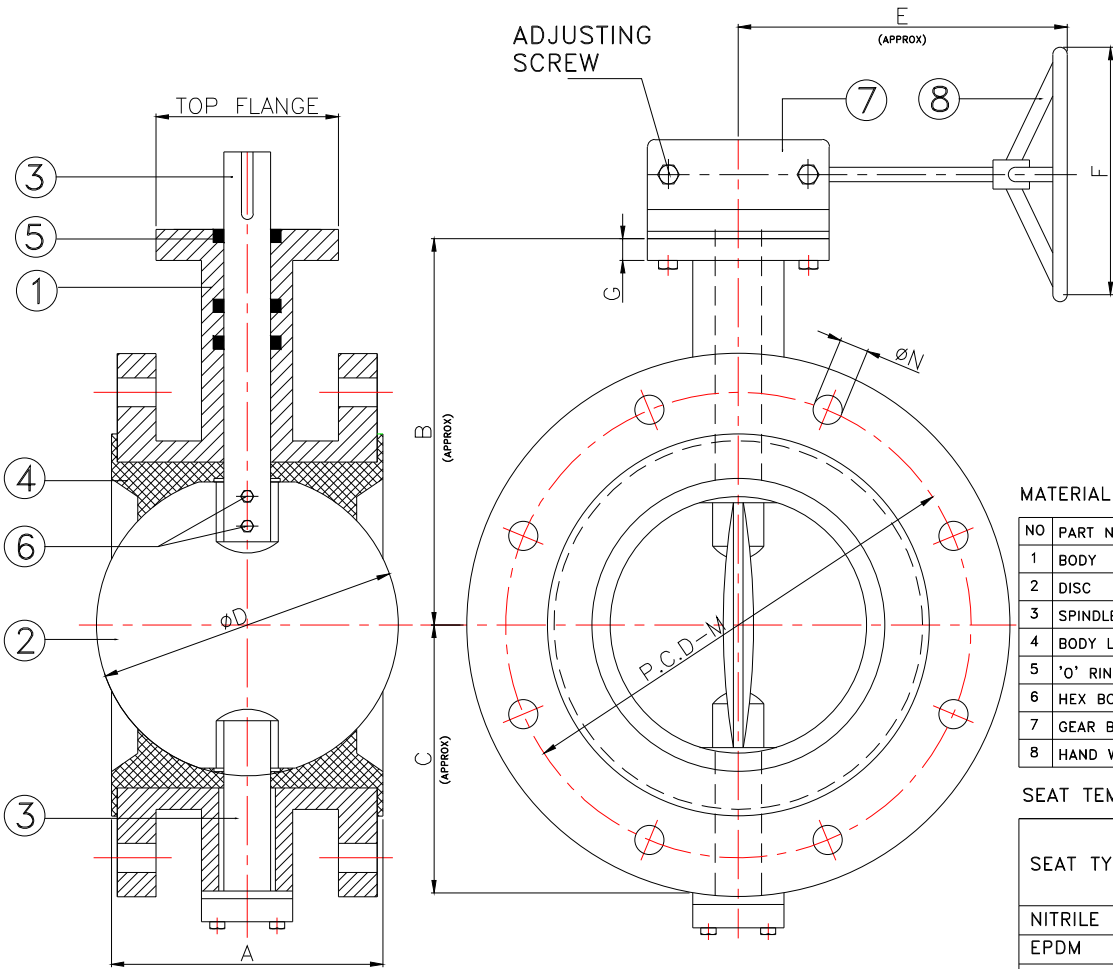
DOUBLE FLANGE CENTRIC DISC TYPE BUTTERFLY VALVE DF-BFV-G/200-600



Mevada Engineering Works Pvt.Ltd.

Unit No.1, Plot No.9, Mistry Industrial Estate,I.B.Patel
Road, Goregaon (East), Mumbai - 400063. INDIA
Email: sales@saturnvalves.com
Visit: www.saturnvalves.com

DRN MASUM	DATE 24/04/2018	
DOUBLE FLANGE CENTRIC DISC TYPE BUTTER FLY VALVE.		
DRG. NO : SE/DF-BFV-G/200-600		



NOTE : ALL DIMENSION ARE IN MM.

SIZE		A	B	C	D	E	F	G	TOP FLANGE MOUNTING (I.S.O 5211)
MM	INCH								
200	8"	152	250	175	200	285	300	15	F10
250	10"	165	285	208	249	285	350	18	F10
300	12"	178	310	227	297	285	350	18	F10
350	14"	190	340	275	348	300	350	22	F12
400	16"	216	376	308	394	305	500	22	F14
450	18"	222	390	373	433	305	500	24	F14
500	20"	229	425	408	470	370	500	26	F16
600	24"	267	500	464	570	350	600	26	F16

O = NUMBER OF HOLES.

NOTE:-M,N,O AS PER REQUIREMENT

M = _____
N = _____
O = _____

MATERIAL OF CONSTRUCTION

NO	PART NAME	MATERIAL
1	BODY	CAST IRON/CAST STEEL/S.S.304-316
2	DISC	CAST IRON/CAST STEEL/S.S.304-316
3	SPINDLE	SS 410/304/316
4	BODY LINING	NITRILE/E.P.D.M./SILICON/VITON/HYPALON
5	'O' RING	NITRILE / E.P.D.M.
6	HEX BOLT	S.S.304/316
7	GEAR BOX	CAST IRON
8	HAND WHEEL	M.S. FABRICATED

SEAT TEMPERATURE RANGE

SEAT TYPE	TEMPERATURE RANGE	
	Min.	Max.
NITRILE	-13°F(-25°C)	212°F(100°C)
EPDM	-13°F(-25°C)	250°F(120°C)
SILICON	-58°F(-50°C)	356°F(180°C)
VITON	-23°F(-5°C)	392°F(200°C)
HYPALON	-4°F(-20°C)	250°F(120°C)

TESTING

PRESSURE RATING	HYDROSTATIC SHELL TEST		HYDROSTATIC SEAT TEST	
	Kg/CM2	PSI	Kg/CM2	PSI
PN16	22	310	16	225
PN10	15	210	10	140
PN6	9	126	6	84

CONFORMITY TO CODES & STANDARDS

- 1) GENERAL DESIGN & MANUFACTURE :- BS 5155 / API 609 / EN 593 / IS 13095
- 2) VALVE FACE TO FACE DIMENSION :- BS 5155 / ISO 5752 / API 609
- 3) TOP FLANGE DRILLING :- ISO 5211
- 4) VALVE INSPECTION & TESTING :- BS 6755 Part - I / API 598 / EN 12266-1
- 5) FLANGE STANDARD CONFORMITY :- ANSI 150 / ANSI 125 / BS 10 TAB D & E
IS 6392 NP 0.6 / 1.0 / 1.6